



UNIVERSITY OF
CAMBRIDGE

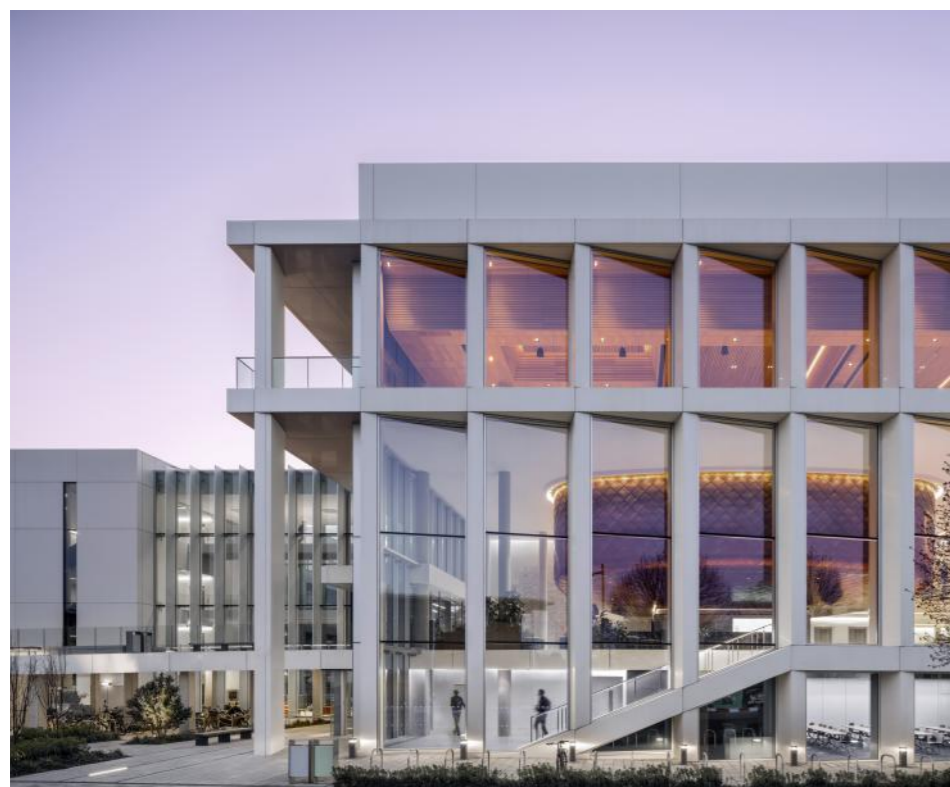
Cavendish Laboratory
Department of Physics

Ray Dolby Centre

Conference and events brochure 2026



Cavendish Laboratory



The place of pioneering physics at the University of Cambridge. At the forefront of scientific discovery for 150 years.

Since 1874 the Cavendish has been at the forefront of scientific discovery. The electron, the neutron, the structure of DNA. 31 Nobel Prize winners. These past successes spur us on to continually redefine and expand the frontiers of physics and its role in the world, passing on our expertise and instinctive curiosity from one generation to the next.

The Ray Dolby Centre, our state-of-the-art facility, is the new centrepiece of the Cavendish. Bright and spacious, the contemporary architecture captures our sense of possibility and our collective aspiration for the future of physics.

It's a deliberately open space, encouraging a collaborative environment and designed with the wider community in mind. Spanning five floors, with one single entry point into the building, you'll see academics, professionals and commercial partners mingling together, all with a sense of where they belong in the bigger picture.

The public wing which includes the Cavendish Museum, and Cavendish Café is open to all. It is also where you will find the Ray Dolby Auditorium, Cambridge's 4th largest auditorium, alongside our other lecture theatres, seminar rooms and networking spaces.

Conference and events

Set in the growing community of the Cambridge West Innovation District, the Ray Dolby Centre offers modern facilities in an inspiring environment, only a short walk from the historic city centre. Whether you're looking for a room for a business meeting or seminar, or you are planning a multi-day conference with full catering provisions, our flexible spaces and lecture theatres provide a unique and memorable setting for your next event.

Meeting Rooms / Support Spaces	Room layouts and capacities						Catering capacities	
	Theatre	Classroom	Boardroom	U-shape	Hollow Square	Poster Boards	Standing	Seated
RDA	407	~	~	~	~	~	~	~
Lecture Theatre	120	~	~	~	~	~	~	~
Cluster Room	~	80	~	~	~	~	~	~
Seminar East	56	24	16	20	24	9	56	~
Seminar West	60	24	16	16	20	9	60	~
Seminar East & West	120	48	24	28	26	18	150	64
Seminar North	~	40	22	~	~	~	~	~
Ground Floor Atrium	~	~	~	~	~	12	150	~
Exhibition Space	~	~	~	~	~	4	125	~
Internal Courtyard	~	~	~	~	~	~	125	~
RDA Support Space	~	~	~	~	~	11	50	~
Cavendish Café	~	~	~	~	~	~	75	120

All of our rooms are accessible and have integrated AV with HDMI and USB-C connections. Hybrid facilities are available in the lecture theatres.

Servicing all meeting rooms, our support spaces offer opportunity across three floors of the atrium for catering, networking, and poster exhibitions, with the first floor Reception area providing space for you to register delegates on arrival.

A range of catering options are available; from morning coffee breaks through to drinks and canapés. A seated option for lunch and dinner can be provided in the Café.

Meeting rooms



Ray Dolby Auditorium

- 407 seat capacity
- 4th largest auditorium in Cambridge
- Integrated AV with HDMI and USB-C connections
- Hybrid capabilities
- USB charging points located between seats
- Accessible seating



Cluster Room

- 80 seat capacity
- Integrated AV with HDMI and USB-C connections
- Hybrid capabilities
- Power points in tables
- Clustered seating inspires a collaborative working environment
- Accessible seating

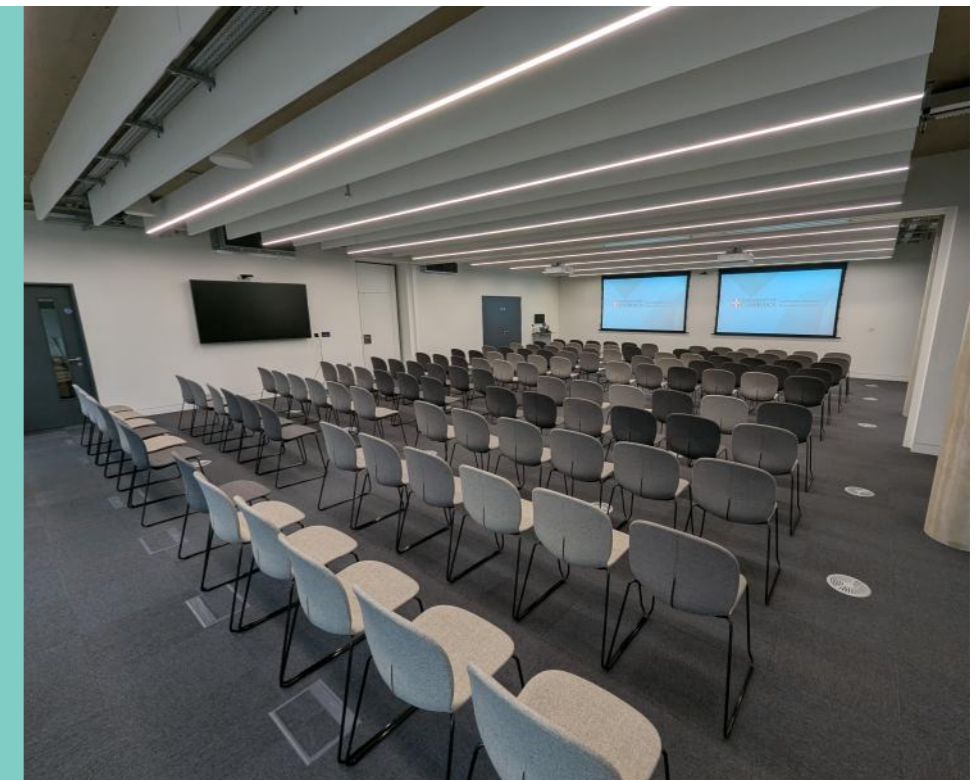
Lecture Theatre

- 120 seat capacity
- Integrated AV with HDMI and USB-C connections
- Hybrid capabilities
- Power points in front of seats
- Accessible seating



Seminar East & West combined

- Flexible space; allowing for a choice of meeting set-ups
- A partition wall creates two rooms with a door linking the two spaces
- Integrated AV with HDMI and USB-C connections
- Accessible seating
- Floor to ceiling windows provide natural light



Support spaces



Seminar East

- One half of the partitioned East & West seminar room
- Flexible space
- Integrated AV with HDMI and USB-C connections
- Accessible seating
- Floor to ceiling windows provide natural light with blinds for privacy if required



Ray Dolby Auditorium Support Space

- Wrap around space directly outside the Auditorium on the second floor
- Provides great views over Cambridge West
- An ideal space for smaller poster exhibitions, or for use alongside other support spaces for larger events

Seminar North

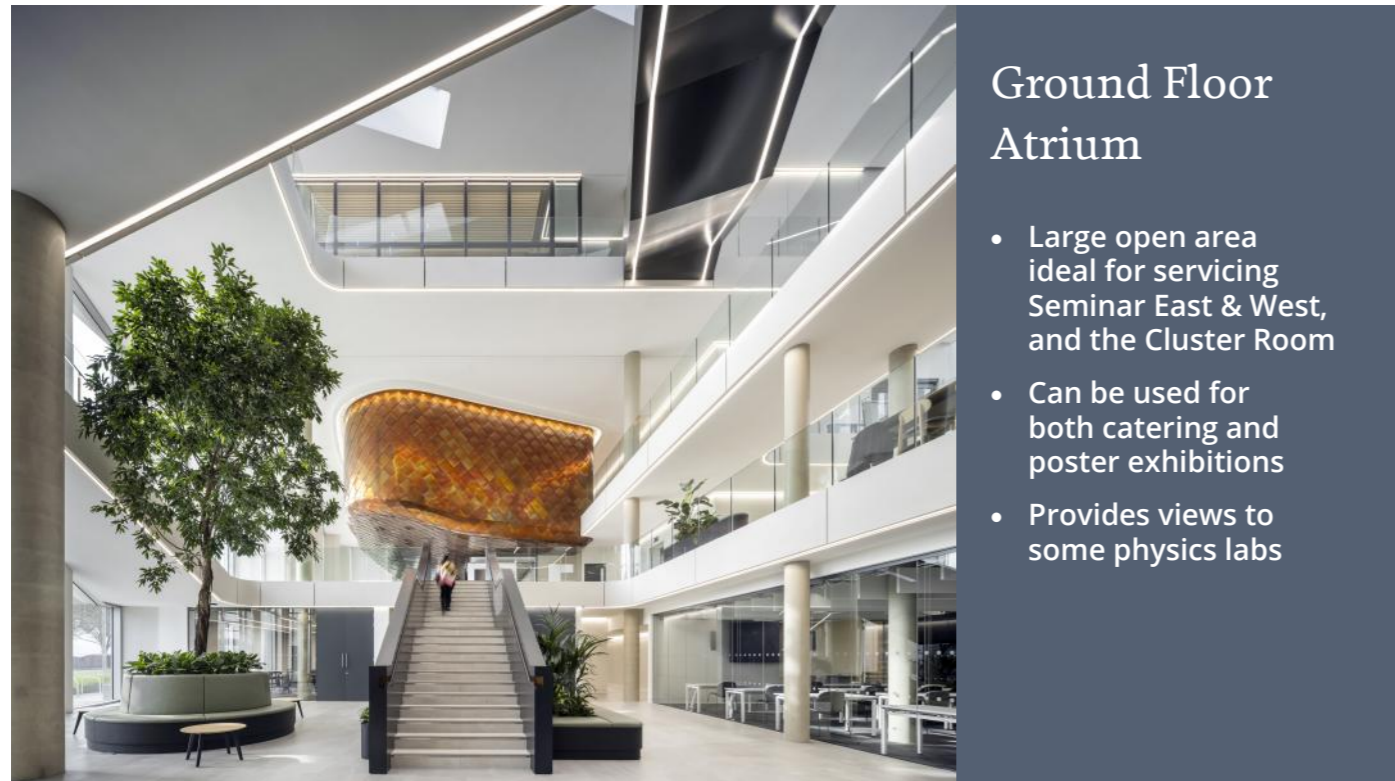
- Semi-flexible space allowing for classroom or boardroom set-up
- Maximum 40 seat capacity
- Integrated AV with HDMI and USB-C connections
- Accessible seating
- Views of some of the physics labs



Central Courtyard

- Spacious area on the second floor
- Directly accessible from both the Lecture Theatre and Ray Dolby Auditorium
- Provides access to the outdoor courtyard area, accommodating up to 60 people





Ground Floor Atrium

- Large open area ideal for servicing Seminar East & West, and the Cluster Room
- Can be used for both catering and poster exhibitions
- Provides views to some physics labs

Exhibition Space

- First floor area which, in conjunction with the second floor Central Courtyard, provides support space to the Ray Dolby Auditorium
- The main display cabinets of the Cavendish Museum are located here, perfect for delegates to explore during refreshment breaks



Pricing

	Full day	Half day	Hourly	Evening Reception	Exclusive Hire (out of term)	Out of Hours
Ray Dolby Auditorium	£1,800.00	£950.00	£300.00	~	£5,500.00	£75p/h surcharge
Lecture Theatre	£1,400.00	£750.00	£250.00	~		
Cluster Room	£1,300.00	£700.00	£235.00	~		
Seminar East OR West	£600.00	£350.00	~	~		
Seminar East AND West	£1,100.00	£600.00	~	~		
Seminar North	£600.00	£350.00	~	~		
Support Space x 1	~	~	~	£300.00		
Support Space x 2	~	~	~	£400.00		
Support Space x 3	~	~	~	£500.00		
Cavendish Café	~	~	~	£600.00	~	

General information

- Support spaces for catering and use of AV equipment is included in the room hire fee
- VAT is not charged on room hire fees, however it is applicable to the out of hours surcharge.

Discounts

- Multiple room bookings: the most expensive rate will be charged at full price with additional rooms charged at a 10% discount
- Weekly rates: 15% discount
- UoC events: 50% discount (Term time events only which are free to attend)
- UoC events: 25% discount (Out of term events and those requiring a registration fee)
- Cambridge West neighbours: 25% discount

Cancellation policy

- 12 months or more: no charge
- 6 - 12 months notice: 25%
- 1 - 6 months notice: 50%
- 0 - 1 months notice: 100%

Cavendish Café



Located on the 3rd floor of the centre with panoramic views of the city, the 150 seat Cavendish Café provides the perfect retreat for busy professionals, researchers, and Cambridge locals alike.

Designed with comfort and style in mind, Cavendish Café features sleek interiors that fuse modern design with touches of warmth, making it an inviting space for all.



Large windows allow natural light to pour in, and offer panoramic views of the vibrant city skyline. With plenty of seating options, from cozy chairs to larger tables perfect for group gatherings, the café provides the ideal environment for both solo visits and social meet-ups.

The Cavendish Café is open Monday - Friday, 8.30am - 3pm

Cambridge Dining C°



‘Delivering seasonal, fresh food within iconic spaces, we pride ourselves on creating memorable event experiences for our guests. Working alongside local suppliers our chef team create fresh, exciting food to suit your brief.’



Our in-house caterers, Cambridge Dining Co. have a range of catering packages available, from tea & coffee and buffet lunches, through to canapés and seated dinner in the café.

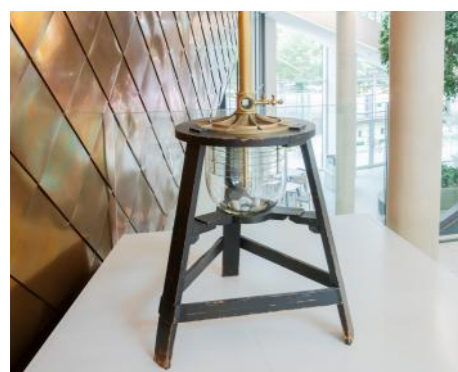
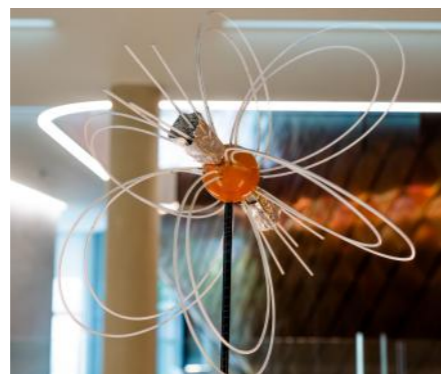
- Daily Delegate Package from £51.00 p/p
- Nibbles Reception Package from £20.00 p/p
- Canapés Reception Package from £30.00 p/p
- Seated Dinner in the Cavendish Café from £99.00 p/p

Cavendish Museum



Since the mid 20th century, the Cavendish Laboratory has held a collection of scientific instruments and archival material that embodies the extraordinary history of the laboratory. Relocated to the Ray Dolby Centre, the beautifully designed Cavendish Museum includes six large freestanding showcases that focus on specific discoveries, instruments or people, five interactive touchscreens with reams of deeper content, three plinths displaying some of the larger objects and two monumental wall cases, which explore themes from the Cavendish Laboratory's research. Items include part of the accelerator Cockcroft and Walton built in their quest to split the atom, one of J.J. Thomson's original cathode ray tubes used in the discovery of the electron, and Watson and Crick's DNA model.

Open to the public Monday - Friday, 8am - 5pm



150 years
of discovery

Get in touch

Booking enquiries

Whether you are planning a brainstorming meeting or a multi-day conference, you'll need to get in touch with the Events team. Please complete our [enquiry form](#) or email events@phy.cam.ac.uk with the details of your event and we will be in touch.

We are also more than happy to give you a tour of our facilities in the public wing. Please contact us to arrange a site visit.

Location

Cavendish Laboratory, Department of Physics
University of Cambridge
JJ Thomson Avenue
Cambridge, CB3 0US

Getting here

We encourage the use of public transport, cycling or arriving on foot. We are a leisurely 30-minute walk from the city centre, or 15 minutes by bike.

By bus: Routes 4, 8, U or X3, or the Madingley Park and Ride route.

By train: There are frequent trains from London King's Cross and Liverpool Street to Cambridge. We're about 3 miles from the station so you may want to take a taxi.

By car: We aren't able to offer parking facilities on site. We encourage you to use the Madingley Road Park and Ride site nearby. It has plenty of free parking, and takes just 10 minutes to walk to the Ray Dolby Centre.

Accommodation

The following accommodation options are within a 20-minute walk of the Ray Dolby Centre

- Møller Institute, Storey's Way, CB3 0DE
- Hyatt Centric Cambridge, Eddington Avenue, CB3 1SE
- Turing Locke Cambridge, Eddington Avenue, CB3 1SE
- Robinson College, Grange Road, CB3 9AN

www.phy.cam.ac.uk | events@phy.cam.ac.uk

