

Ray Dolby Centre and Shared Facilities Hub Newsletter

Issue No: 30

February 22



Welcome

We hope that you all remain safe and well during these times. Please find our latest update of the Project Newsletter and a Happy New Year to you all.

We are continuing to implement COVID safety measures. The routine of hand-washing, temperature checking and putting a new mask on every time the site is accessed continues; these measures are essential to ensure the whole site remains safe. We also carry out full testing of the whole workforce every 2 weeks and office staff are testing twice a week.



Progress to Date

West Cambridge Infrastructure

We have started the works on JJ Thomson Avenue. The overall works will be extensive, with an upgrade of the footpath, the cycle path, the bus stops and the carriage way. They will last most of the year and will be done in phases, which have been agreed with the University.

Footpath routes and road crossings will be very clearly signed to provide safe access. We kindly ask that people respect and follow these directions, keep to footpaths and avoid walking on the road. This especially so around the main site entrance which has constant vehicle activity, but we will work to minimise any inconvenience



Shared Facilities Hub (SFH)

The whole project team is working hard to hand-over the Shared Facilities Hub building to the University in the coming weeks. All the services have now been tested and we are putting the finishing touches to the painting and cleaning.



SFH – Outside Cycle Storage & Gardens



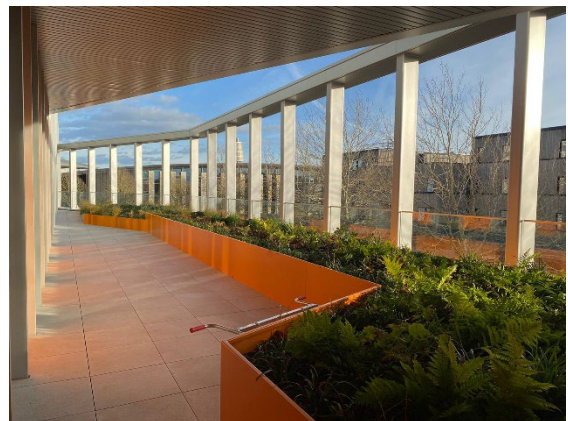
SFH – Main Atrium



SFH – Internal Planting



SFH - Terrace



Ground Floor Canteen



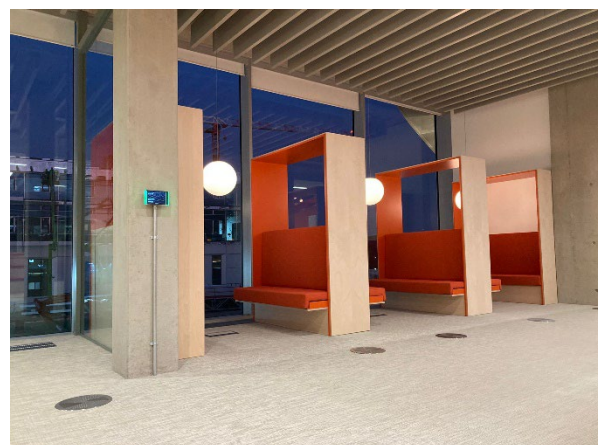
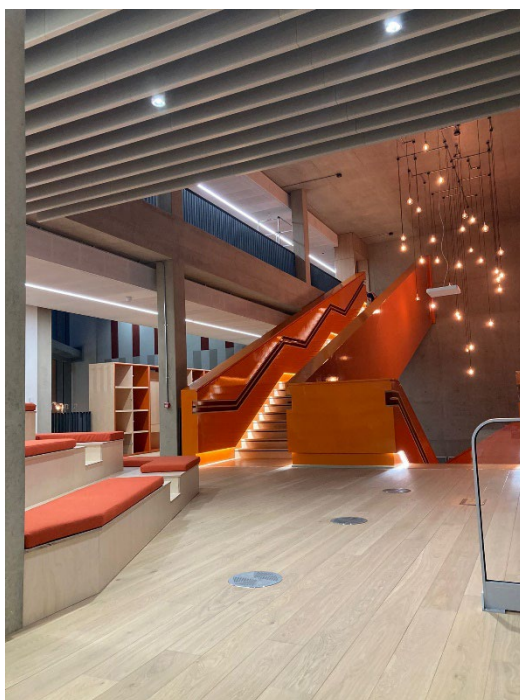
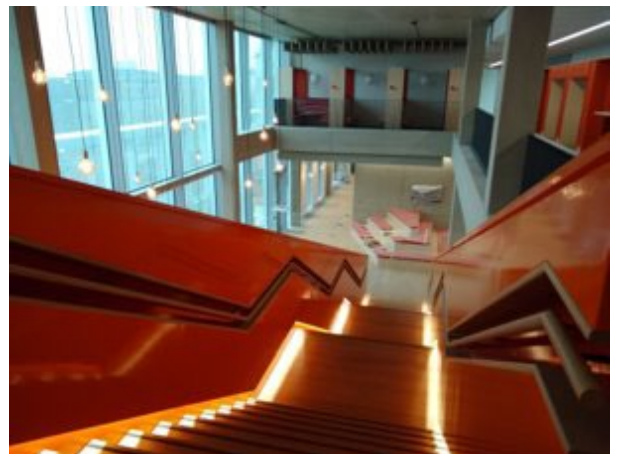
Ground floor Café / Bar



Level 1 Low Intensity Study



Atrium Feature Stairs



The Ray Dolby Centre



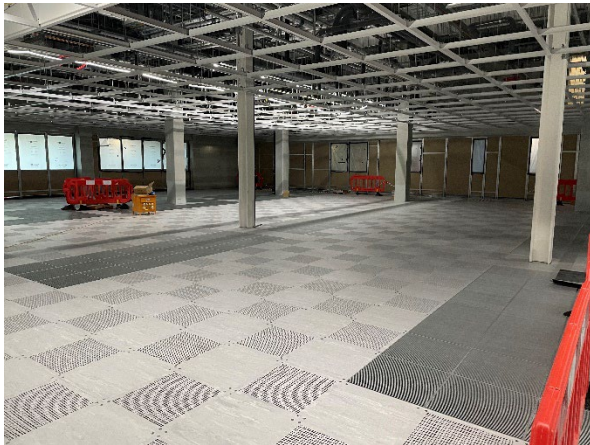
The building envelope continues to progress sequentially around the site with 80% of the building watertight. The curtain wall installation on JJ Thomson avenue is progressing, forming the most architecturally striking facades on the building.

Internally the building continues to be transformed with the workshops and office spaces now progressing into the final fit out stage with joinery, decoration and floor finishes ongoing.

Wing 4 is entering a final decoration stage, shortly followed by the upper levels of wings 3 and 2. In those areas, flooring finishes and ceilings installation are progressing in order to substantially finish the first floor areas in the next few months.

Wing 5 is also moving ahead with the lecture theatres services installation and the atrium space is taking shape...

The clean rooms have changed a lot over the past few months with raised access flooring and ceiling installations.



Inside the clean rooms...



And above the clean rooms...



Large Lecture Theatre Partition



Office Corridor Wing 3 Level 2



Overview of the Mechanical



Feature stairs wing 5

Project Programme

Site Programme and Occupation:

- Shared Facilities Hub Construction – Feb 2022
- Ray Dolby Centre Construction – Early 2023
- Infrastructure – late 2022



Forthcoming Construction

Removal of the crane TC5 – We are planning on removing TC5 located very close to JJ Thomson, in order to reduce the impact on the local infrastructure we are planning on doing this the weekend of the 2nd - 3rd April 2022 – further details to follow.

Infrastructure Works

The New Year will be the time for our External works team to come out of the site again. JJ Thompson Avenue is going to be the focus of 2022, as upgrade works and landscaping will span throughout the year. They have been sequenced to ensure that all buildings remain accessible at all times.

Shared Facilities Hub (SFH)

Over the next few weeks, we are planning to Hand-over the building to the University. Following a moving-in period, the building will be opened to the public later this year.

Ray Dolby Centre

Works will continue on all fronts: facades, partitions, ceilings, electrical and mechanical trades.

Working hours

Our working hours as detailed in the planning agreement:

- Weekdays from 08.00 to 18:00
- Saturdays from 08.00 to 13:00

Should you have any specific concerns or require additional information on the above procedures, please contact our central admin team at admin.cavendishIII@bouygues-uk.com and then one of our management team will be in contact with you to discuss.



Social Value

A Day in the life..... Zak Smith

A day in the life of the site engineer on a Bouygues site is quite varied. My responsibilities range from reviewing design drawings and inspecting on site installation to assisting with the commercial reporting and forecasting and planning futures works with my own team or our subcontractors.

Of all the works I have responsibility for, the biggest (quite literally) is the Precast Façade package. It covers most of the external façade of the Ray Dolby Centre building with the panels coming from a supplier in Belgium. The panels range in size from 1m by 2m to some fantastically large panels 8m by 4m and weighing a massive 15000kg (15t). The process for installing these includes liaising with my colleagues in the façade team to identify when will be ready for the panels to be installed, whilst making sure that all the dimensions and details on the building and on the panels are correct and that the connection details are feasible for the installation team on site.

When we all know that we are ready, we arrange the delivery of all the connection pieces and the panels from our supplier in Belgium and identify how we will arrange the trailers and the mobile cranes that are required to install them with the help of the lifting team. The toughest areas on the building are usually in the tighter spaces where sometimes the panels are interlocked with different shaped panels and they have to come on separate trailers, or when the panels are so big they have to be delivered on their side, for this we use two cranes in tandem to turn the panels mid-air. So, in locations where we need to arrange for two 70tonne cranes and two or even three trailers to be moved in and out, it takes careful planning.



Each day I try to split my time between focussing on the needs of the panel installation team and any design or installation issues that may arise, and planning for new areas of the building whilst making sure we are ready to install as soon as those areas are made available to the team.



Another part of my role is the façade of our smaller project SFH, on which I manage the handful of subcontractors that make up the envelope works, helping to drive the completion of the outstanding works and liaising with the Client's agents for final inspections and handover. Each day I try to identify key areas for the contractors to finish so that they can be presented to the client as we come toward the completion of the project.



I have worked here for three years now, looking after many different elements including infrastructure works both in and outside the site boundary and the structural frame as well. Each day we come across different challenges that test us but make working on a construction so interesting.

Corporate Social Responsibility

Recycling Materials

We will be opening the recycling bins again soon in line with government Covid -19 guidance so if you have any projects you are thinking about please contact us, we have quite and extensive wood area with a variety of wood and pallets available. An appointment for collection will need to be made with Sam Mayo and Covid social distancing rules followed.

Our Logistics manager Jojo continues to work hard with the site to re-use wood and has also joined a community wood recycling project. This has meant that we have not sent any wood for waste for several months now and have recycled over 100 tonnes.

Jojo has also received an award for BYUK Sustainability Champion for 2021.



Charity

Well we are hoping that 2022 will give us more opportunity to engage outside of the site and raise money for local charities:

We raised £450 in 2021 and donated 20 laptops to local schools.

Work Experience, Trainees, Apprentices & Graduates

We continue to promote opportunities in construction, if you are interested further in opportunities please contact Sam Mayo by email.

Daniel Emordi joined the team on the 1st November, Daniel is with us for a 1 year industrial placement.....the following is his journey so far in his words....

I am currently on my placement with Bouygues from Loughborough University studying Construction Engineering Management on a four-year course. Uni life has been great, from settling in and meeting new friends to learning so much and executing projects. I am very pleased with how I have settled into Bouygues and caught up to speed with the rest of the team. Initially I was looking after part of the fire-stopping for the Ray Dolby Centre Project



Now, I have moved into the Shared Facilities Hub (SFH) project managing a sub-contractor - Magic Man, their role is to repair any damages on surfaces such as doors, shower panels etc.

I have even had the opportunity of being the floor manager of Level 2 in SFH. This has gone very well, and I have had opportunity to work with the Client – Cambridge University, by understanding their requirements and the standards required for the building has enabled me to manage the subcontractors and their works effectively.

I have been given the resources which can support me in ensuring I optimise time, cost and quality. Colleagues are helpful and always willing to help. I enjoy the environment and the support. We are like a family here.

Residents' & Neighbours' Meetings

We opened the site to our residents and neighbours on the 27th January.....

The latest drone footage taken by Currie & Brown the Project Managers can be found on YouTube - <https://www.youtube.com/watch?v=xXHcQtVmGcE>

Your safety is our concern

Bouygues UK takes every precaution to keep you safe throughout the construction process.

At all times, our site will be secure and surrounded by fencing but building sites can be hazardous places:

- We dig deep holes
- We erect scaffolding
- We use large, noisy machinery

Please do not enter the construction site, unless it is part of a pre-arranged visit by our project team.

- Our operatives and staff are trained to work safely

Please help us to keep you and children safe, and take extra care during the school holidays.



Considerate Constructors Scheme

As with all our projects, this site will be registered with the scheme, and regular visits from the Considerate Constructors monitor will help us to ensure that we continue to improve our performance in showing full respect for:

- Appearance
- Safety
- Community
- Workforce
- Environment

Please let us know if you have any concerns.

Our contact details are below.

If you would like further information regarding the Scheme you can visit their website at: **www.ccscheme.org.uk**



Standard site working hours are:

Monday – Friday: 0800 - 1800

Saturday: 0800 - 1300

There should be no noisy works before 0800

Want to speak to us?

We understand you will want to know what is happening in your area. Our team is available to answer any queries or concerns you may have and are only too pleased to hear from you. If you have any community projects that you think Bouygues UK could get involved with, please contact the site team below.

Neil Pixsley

07903 539800

neil.pixsley@bouygues-uk.com

Marie Chuet

07971 078094

marie.chuet@bouygues-uk.com

Paul Stewart

07539 033992

paul.stewart@bouygues-uk.com

Sam Mayo

07940 129331

samantha.mayo@bouygues-uk.com