

Ray Dolby Centre and Shared Facilities Hub Newsletter

Issue No: 31

July 22



Welcome

Please find our latest update of the Project Newsletter



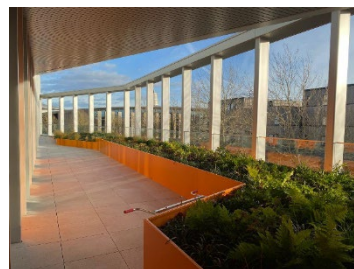
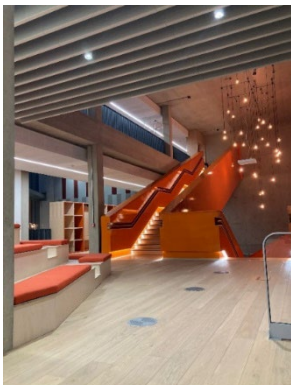
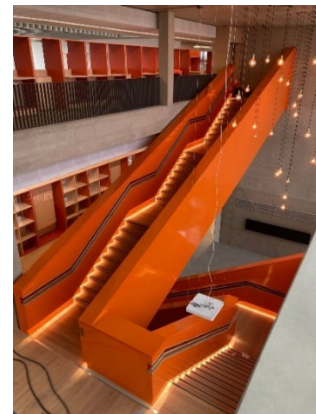
Progress to Date

Shared Facilities Hub (SFH)

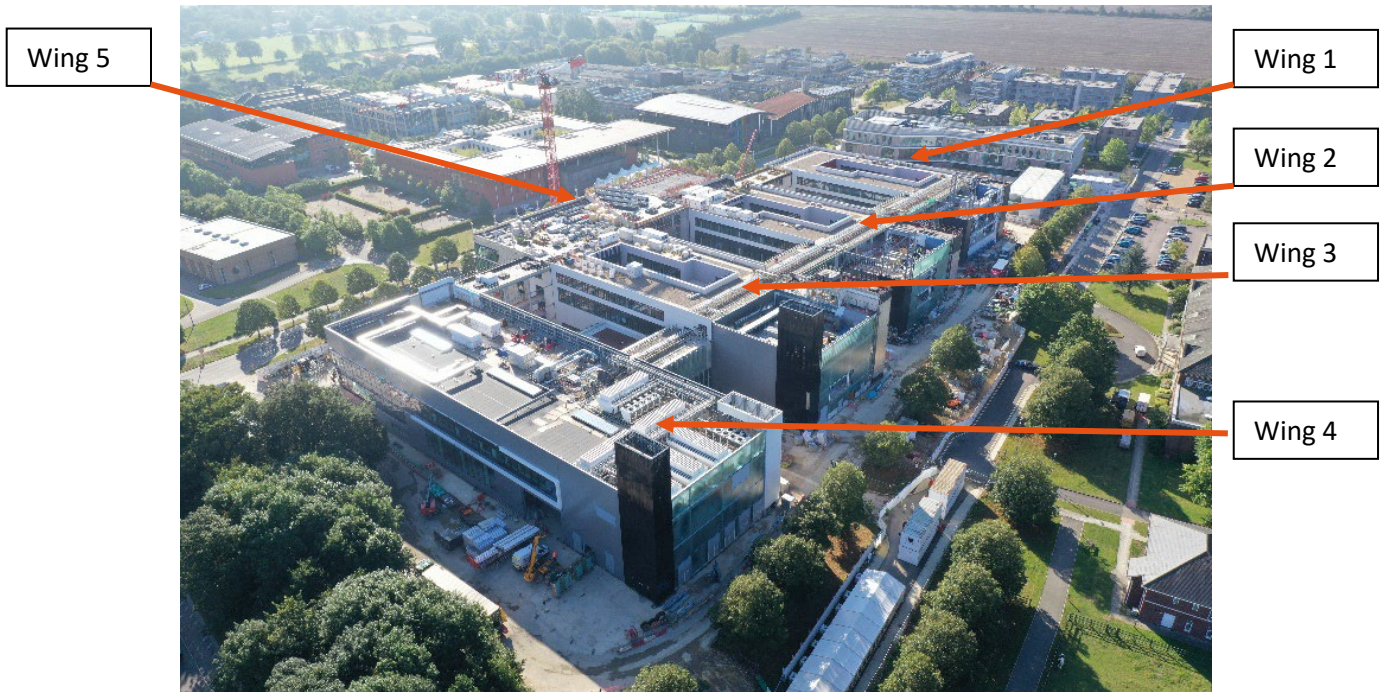
The team worked really hard and were proud to finally hand over the Shared Facilities Hub building (now known as the “West Hub”) to the University in February. The University have started operations of the building and all can now enjoy a meal in the Canteen or a drink the W Café & Bar.

The finished Building – Photographs by Paul Rafferty -

<https://www.rafphoto.com/>



The Ray Dolby Centre



Works continue throughout the Ray Dolby Centre. About half of the 300 offices have been decorated and inspected and focus is shifting to research laboratories and wing 5.

At the heart of the building, the clean rooms are now enclosed and the rooms are being fitted out with specialist services, from lab gases to process cooling systems. There are as many workers in the rooms as there are above the walk-on ceilings in order to install the staggering amount of ducts, pipes and cables needed.

Laser labs in the basement are also moving along. High level services are on the last stretch and a big “cable pulling operation” has started to install the 10km of cables needed to bring power to those labs.

Wing 5, the public wing has changed dramatically in the last couple of months. While the east façade (facing JJ Thomson avenue) is being cladded with polished concrete, a huge internal scaffold now occupies the main atrium and the ceiling is being fitted in the large lecture theatre.

On the perimeter of the building, the refuse store / garage building structure has been erected and the service yard surface has been prepared.

Hard and soft landscaping are ongoing, especially in the courtyards, where they are helping to bring the final building together.

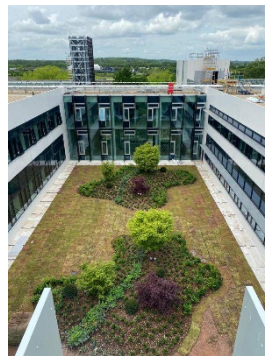
West Cambridge Infrastructure

Works to update the drainage system are now completed, in and around the site.

The upgrade of JJ Thomson is on-going and the first 4 phases (out of 9) have been completed.

The new vet school access road from Madingley road has been opened and is now operational.

This allows the hard and soft landscaping works in front of the vet school to start.



Project Programme

Site Programme and Occupation:

- Shared Facilities Hub Construction – Completed
- Ray Dolby Centre Construction – Early 2023
- Infrastructure – late 2022



Forthcoming Construction

Removal of the crane TC5

We will shortly be removing our last tower crane TC5. This 2-day operation will require a large mobile crane, which will be stationed across JJ Thomson Avenue.

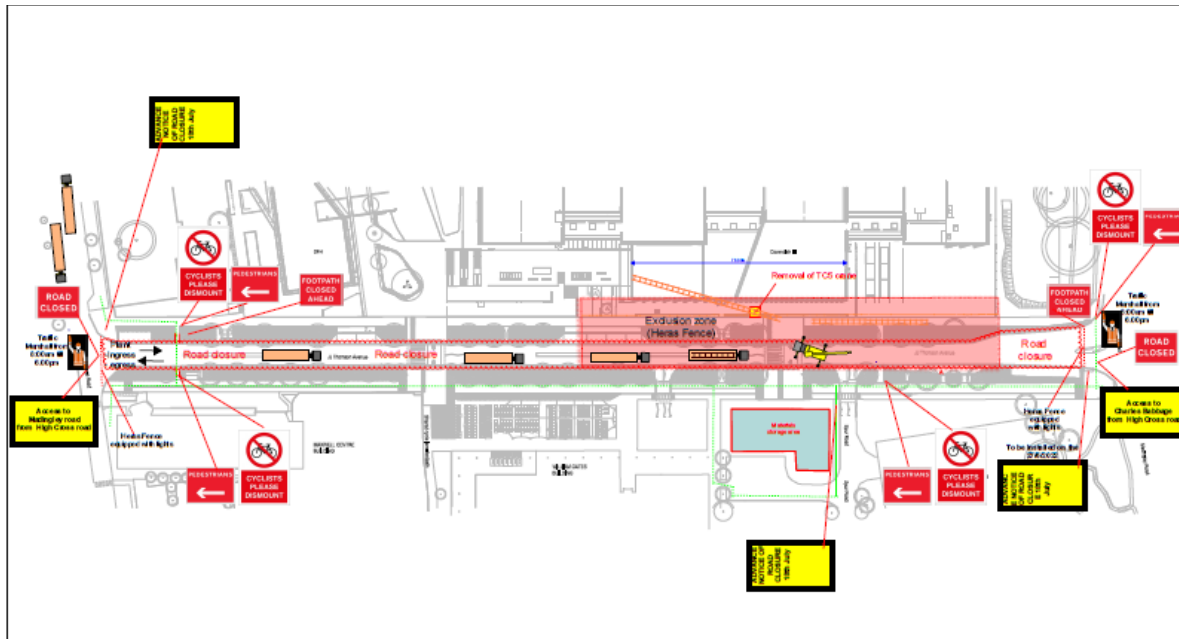
This means that JJ Thomson Avenue will be temporarily closed to traffic for 2 days and pedestrian / cycle access will be restricted.

The bus stops on JJ Thomson Avenue will be closed for the weekends but those on Charles Babbage Road will remain operational.

There will also be a limited number of large articulated vehicles on High Cross and Charles Babbage Road, which will all be escorted by our banksmen.

In order to reduce the impact on the local University infrastructure, we have arranged for this to happen over a weekend. The scheduled dates are the 23rd/24th July 2022, with a reserve date for the 30th / 31st July 2022. We have sought permission from the Cambridge City Council Environmental Health / Environmental Services, Planning Enforcement and Construction Monitoring Officers who have approved weekend works.

Pedestrian Traffic Management plan on JJ Thomson is shown below:



Following the dismantlement of the crane, we will proceed with the demolition of the last crane foundation between the 1st and the 13th August. We will be using a method where we will be cutting the concrete instead of breaking it. We expect that this method will considerably reduce the vibrations produced. Unfortunately, we will not be able to avoid generating some noise in that period. We will of course set up noise barriers around the works and carry out monitoring in order to remain with the levels permitted.

Working hours

Our working hours as detailed in the planning agreement:

- Weekdays from 08.00 to 18:00
- Saturdays from 08.00 to 13:00

Should you have any specific concerns or require additional information on the above procedures, please contact our central admin team at admin.cavendishIII@bouygues-uk.com and then one of our management team will be in contact with you to discuss.



Social Value

A Day in the life..... Billy Sharman, Internal Trades Manager

I am the Internal Trades Manager for The Ray Dolby Centre Project, I joined Bouygues UK in the summer of 2019. From 2019 – early 2021 my role and responsibilities were focused on completion of internal trades procurement. I lead all tender process of all subcontractors followed by approval of design and holding direct discussions with the client for approval of all products chosen for the building. Several packages took several months to achieve approval. Due to the nature of the building this was not unexpected, the procurement was extremely interesting and challenging

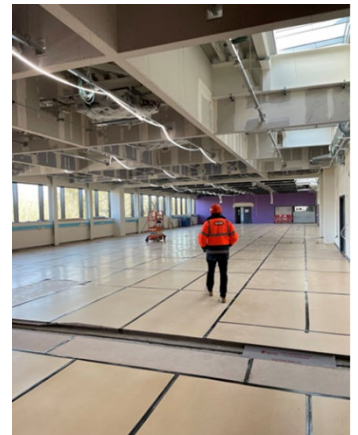


One of our first and most important internal trade subcontractors were the plasterboard partitions amounting to total of 30,000 lm. Each partition designed to accommodate all fire, acoustic and infrasound requirements. During the initial stages we had to ensure all partitions captured all holes for the quantity of services required. We used a simple process of dissecting every penetration using BIM (Building Information Modelling) through a wall totalling to circa 20,000. All of which must be fire or acoustically sealed depending on the performance requirements.

Late 2021 I took control of completing the handover of our first Wing which is Wing 4. This wing mainly consists of labs and workshop areas for the university users, WC, AWC and breakout areas. In early 2022 we have started the process of client snagging; this has been a challenging and exciting process which after two and a half years on the project has been a stage much welcomed.

A typical day for myself starts with a “black hats” meeting where all supervisors/managers and commercial team attend. We review labour resources and key tasks for the day, blockers and any outstanding snags. I liaise with each site manager to ensure they have the support they need and are achieving all targets set for their work areas. Each day I liaise closely with our commercial team tracking each package and any contractual items that require attention. Throughout the week I keep a close relationship with our client team to review safety concerns, on-going installations, quality, and anything they need my support or information for.

2022 will be a huge year for us, our team are dedicated to meeting the Client’s expectations of providing a building the University and community of Cambridge are proud of.



UNIVERSITY OF
CAMBRIDGE



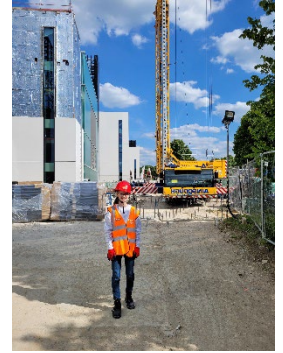
Shared innovation

www.bouygues-uk.com



Work Experience Opportunity on Site.....Pauline Lux

Hi, I am Pauline Lux, and I am a Year 11 student at the French Lycee in South Kensington London. I am absolutely passionate about physics and maths which is why I wanted to come and do a work experience at Bouygues UK. The Ray Dolby Centre project at Cambridge was particularly interesting to me because of its specific requirements and the many challenges it had, presented a unique learning opportunity for me. In addition, it was an opportunity to discover the future physics laboratories of a world leading university.



During my work experience, I have learnt about the many specifications set by Cambridge University for their new physics experimental laboratories, such as the strict vibration criteria required for some laser experiments. I was also shown the many solutions put in place to reduce the vibrations like the hundreds of springs and the massive concrete blocks installed in the building and I was able to take part in one of the final vibration tests on site.

In addition, I discovered the very specific temperature, pressure and humidity requirements for the clean rooms. The added challenge was that, once the building is completed, it would be near impossible to change the equipment if they did not fulfil those requirements.

Learning about the design and construction of the clean rooms, and the vibration criteria in the basement helped broaden my general understanding of physics and realise how purely theoretical physics are applied to real life situations whilst considering the technical limitations.

Then, I was allowed to attend two meetings on some of the technical aspects of the projects like clean rooms and air leakage control. I have to admit, I was a little lost, at first, with all the technical vocabulary. However, they enabled me to better understand how and why Bouygues UK uses specialist contractors for certain areas of design and work. It also gave me a glimpse on some of the managerial features for different key roles at Bouygues UK.

Finally, the visit of two functional Cambridge university departments was arranged for me. The first one was the Cavendish II buildings; the actual physics building in use today, where I was told about the numerous discoveries made by Cambridge physicists. I was also given a small tour of the Institute for Manufacturing, a branch of the engineering department, where I saw a few of the machines some of the students built.

During my time with Bouygues UK, I also got the opportunity to meet with the different experts in the technical department which helped me understand how a project goes from being a drawing on a plan during the preconstruction stage to a fully functional building. I discovered the way structures and foundations can be made from different materials depending on their intended use and user requirements, but also the ways the teams reduce the negative environmental impact the construction has by keeping the amount of materials used to a minimum. I was especially impressed by every detail the team must think about during preconstruction; from the material the structure is made of to the location of the safety equipment, everything has to be carefully thought about and planned.



UNIVERSITY OF
CAMBRIDGE



Shared innovation

www.bouygues-uk.com

Corporate Social Responsibility

Recycling Materials

We will be opening the recycling bins again soon in line with government Covid -19 guidance so if you have any projects you are thinking about please contact us, we have quite and extensive wood area with a variety of wood and pallets available, please let us know if you need anything for a project at home.

Charity

Well, we are hoping that 2022 will give us more opportunity to engage outside of the site and raise money for local charities:

We supported the Cambridge Wind Band for their 10-year concert on the 23rd April, raising funds for Alzheimer's research.

A group from the project took part in the annual pathfinder march to raising funds for some local Ukrainians, they raised £1355 in total.



Work Experience, Trainees, Apprentices & Graduates

We continue to promote opportunities in construction, if you are interested further in opportunities please contact Sam Mayo by email.

Residents' & Neighbours' Meetings

- Thurs July 21st
- Thurs Oct 20th

The latest drone footage taken by Currie & Brown the Project Managers can be found on YouTube - <https://www.youtube.com/watch?v=xXHcQtVmGcE>

Your safety is our concern

Bouygues UK takes every precaution to keep you safe throughout the construction process.



At all times, our site will be secure and surrounded by fencing but building sites can be hazardous places:

- We dig deep holes
- We erect scaffolding
- We use large, noisy machinery

Please do not enter the construction site, unless it is part of a pre-arranged visit by our project team.

- Our operatives and staff are trained to work safely

Please help us to keep you and children safe and take extra care during the school holidays.

Considerate Constructors Scheme

As with all our projects, this site will be registered with the scheme, and regular visits from the Considerate Constructors monitor will help us to ensure that we continue to improve our performance in showing full respect for:



- Appearance
- Safety
- Community
- Workforce
- Environment

Please let us know if you have any concerns.

Our contact details are below.

If you would like further information regarding the Scheme you can visit their website at: **www.ccscheme.org.uk**

Standard site working hours are:

Monday – Friday: 0800 - 1800

Saturday: 0800 - 1300

There should be no noisy works before 0800

Want to speak to us?

We understand you will want to know what is happening in your area. Our team is available to answer any queries or concerns you may have and are only too pleased to hear from you. If you have any community projects that you think Bouygues UK could get involved with, please contact the site team below.

Neil Pixsley

07903 539800

neil.pixsley@bouygues-uk.com

Marie Chuet

07971 078094

marie.chuet@bouygues-uk.com

Paul Stewart

07539 033992

paul.stewart@bouygues-uk.com

Sam Mayo

07940 129331

samantha.mayo@bouygues-uk.com