

West Cambridge Gateway Projects

Ray Dolby Centre; Shared Facilities Hub;
Infrastructure Works

Issue 27 – May 2021



We hope that you all remain safe and well during the Covid-19 crisis. Please find our latest update the twenty seventh edition of the Project Newsletter.

Construction of the new Ray Dolby Centre continues to make good progress with the average number of people on site now reaching 540 during April. We anticipate these numbers to further increase over the coming months with the commencement of new subcontractors on internal architectural trades and the push to achieve completion on the Shared Facilities Hub.

We continue to face continued pressures due to the COVID pandemic but these have been managed carefully on site with full protective measures implemented since April last year still in place. In addition to these existing measures, we are also undertaking Lateral Flow testing of everyone on the project every 2 to 3 weeks which takes a tremendous amount of effort from the team organising over 500 people to be tested over a 3 day period!!

Around the West Cambridge Campus – Infrastructure works

As per the planning conditions we are planning works to improve the pedestrian and cycle paths on JJ Thomson Avenue. They are expected to start in July for a duration of around 4 months.

We may need to close a small section of the footpath by the SFH works in May for Landscaping works too.

They will cause some temporary closure of the footpaths, which we are sequencing to minimise any impact on all users and to keep a clear access of all the buildings from the road.

The main Electrical supply which will feed the buildings has been energised with permanent power now feeding the Shared Facilities Hub. Other utilities (gas, water, phone lines) have also been connected.

Our infrastructure teams are also preparing the hard and soft landscaping around the Shared Facilities Hub.

The Bouygues UK logo, featuring the word "BOUYGUES" in a bold, sans-serif font above the word "UK" in a smaller, green, sans-serif font, all contained within a white oval with an orange border.

Shared innovation

www.bouygues-uk.com



On site

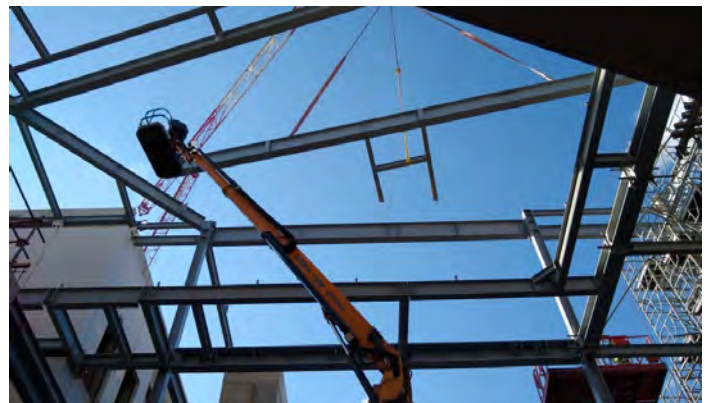
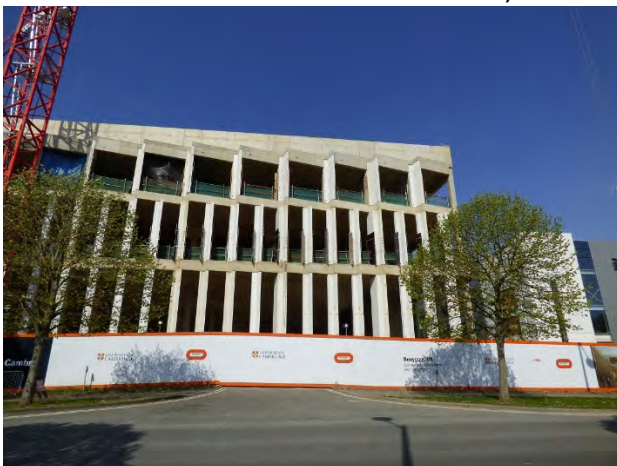
On the Shared Facilities Hub the façade is substantially complete with the orange cladding progressively being covered with the veil cladding.

Internal fit out is progressing with finishing trades now fully mobilised. Raised access floors are getting pressure tested, kitchen equipment is being installed and the painters are working their magic! The mechanical and electrical works are reaching the final stages with Testing and Commissioning starting in the next few weeks.



On the Ray Dolby Centre, the structural works are now complete on all wings except Wing 5, the public wing.

The main area of focus now is the completion of the steel structure to Wing 5 which involves careful sequencing of the precast columns and steelwork, together with extensive temporary works. The first area of this frame is complete which forms the main central atrium, and shortly we will be installing the main steel trusses for the small lecture theatre, which will be “hanging” from the roof.



The building envelope continues to progress sequentially around the site with most of the building watertight for the main wings. Works are now focusing on the CUBs and the links, before moving on to wing 5 facade.



Shared **innovation**

www.bouygues-uk.com



Internally the building is progressing in all areas with Internal trades and Mechanical and Electrical works ramping up resources progressively.

Wing 4 (workshops and teaching laboratories) is the most advanced area of the project with painting, preparation for floor finishes, glazed partitions and ceiling grids starting to progress.

The main plantroom areas are progressing well, especially the Ground Source Heat Pump room .

Wing 2 and 3 office areas are being worked in sequentially with the most advanced areas now having glazed partitions and grids for the acoustic rafts being installed.

The clean room areas on Wings 2 and 3 have seen significant progress with the majority of all the high level services substantially complete. Cleanroom partitions and plenums are in construction and with the perimeter walls shortly due to be closed these areas will move to the next phase of works where the works will be completed in a controlled environment.

The Cryostat Hall in Wing 1 now has all the main steelwork and lifting beams installed allowing the high-level services to progress.



Tower crane TC2 will be dismantled in May and we are reviewing the removal of the foundation to try to reduce as much as possible the noise and vibrations caused.

Working hours

We have received confirmation of extended working hours, prolonged until end of September 2021. The new hours are:

- Weekdays from 07.00 to 20.00
- Saturdays from 08.00 to 19.00

The extended hours are essential for us to be able to stagger arrival and departure from site maintaining social distancing and enabling us to extend meal and break times for all workers throughout the day, the routine of hands-washing, temperature checking and putting a new mask on every time to access the site and to move from one area to another increases the time getting around; but is essential to ensure the whole site remains safe.



Shared innovation

www.bouygues-uk.com

The following actions will ensure any impact arising from extended hours is minimised:

- No deliveries are permitted outside of the original approved work hours (8am to 6pm),
- High noise impact activities are restricted to the current original working hours (concrete breaking, piling, cutting and grinding activities).
- Additional noise monitoring is manually undertaken by our logistics team during the extended hours to ensure compliance,
- All site access gates are closed to reduce noise breakout from the hoarding during the extended hours.
- During the extended hours, there will be full supervision and senior management present on site to respond to any residents or local authority concerns.

In answer to some feedback from some of our neighbours, we have also stepped up our awareness campaigns on the impact of noise and are working to reduce noise emissions, especially before 8am.

Should you have any specific concerns or require additional information on the above procedures, please contact our central admin team at **admin.cavendishIII@bouygues-uk.com** and then one of our management team will be in contact with you to discuss.

Alternatively please call one of the Site Management Team whose details are on the last page.



Corporate Social Responsibility

Recycling Materials

We will be opening the recycling bins again soon in line with government Covid -19 guidance so if you have any projects you are thinking about please contact us, we have quite and extensive wood area with a variety of wood and pallets available. An appointment for collection will need to be made with Sam Mayo and Covid social distancing rules followed.

Our Logistics manager Jojo continues to work hard with the site to re-use wood and has also joined a community wood recycling project. This has meant that we have not sent any wood offsite for several months.

Charity

Fundraising for charities in 2020 was very difficult due to Covid restrictions, we did manage to support some local charities raising £568 in total.

We are looking at fundraising initiatives for the summer onwards once restrictions lift.

Work Experience, Trainees, Apprentices & Graduates

We continue to promote opportunities in construction, if you are interested further in opportunities please contact Sam Mayo by email.

Some of the organisations we are or will be working with in the future are:

- Form the Future; Women in Construction; Cambridge Regional College; Anglia Ruskin University;
- as well as the University of Cambridge itself.

If you know of someone interested in construction who would like to be considered for a placement on the project, please get in touch.

Residents' & Neighbours' Meetings

We are hoping that by the summer we will be able to resume site visits and residential meetings and we hope that as soon as we are able you will be able to join us.

The latest drone footage taken by Currie and Brown the Project Managers can be found on U-Tube <https://www.youtube.com/watch?v=vFHiliNsyyQ>

Considerate Constructor Scheme

We continue to work with Cambridge Considerate Contractors Scheme and the Cambridge Forum for the Construction Industry and the national Considerate Constructors Scheme – who's next visit will be in May.

Project Programme

Site Programme and Occupation:

- Shared Facilities Hub Construction – Mid-2019 to mid 2021
- Ray Dolby Centre Construction – Late 2018 to Late-2022
- Infrastructure – Late 2018 to mid 2022

BOUYGUES
UK

Shared innovation

www.bouygues-uk.com

Your safety is our concern

Bouygues UK takes every precaution to keep you safe throughout the construction process.

At all times, our site will be secure and surrounded by fencing but building sites can be hazardous places:

- We dig deep holes
- We erect scaffolding
- We use large, noisy machinery

Please do not enter the construction site, unless it is part

of a pre-arranged visit by our project team.

- Our operatives and staff are trained to work safely
- Please help us to keep you and children safe, and take extra care during the school holidays.



**HEALTH
& SAFETY**
**A SHARED
COMMITMENT!**

Considerate Constructors Scheme

As with all our projects, this site will be registered with the scheme, and regular visits from the Considerate Constructors monitor will help us to ensure that we continue to improve our performance in showing full respect for:

- Appearance
- Community
- Environment
- Safety
- Workforce

Please let us know if you have any concerns.

Our contact details are below:

If you would like further information regarding the Scheme you can visit their website at www.ccscheme.org.uk



Standard site working hours are:

Monday to Friday:

Saturday (if needed):

There should be no noisy works before 8am.

Want to speak to us?

We understand you will want to know what is happening in your area. Our team is available to answer any queries or concerns you may have and are only too pleased to hear from you. If you have any community projects that you think Bouygues UK could get involved with, please contact the site team below.

Your contacts



Neil Pixsley

Project Director
Tel: 07903 539800
neil.pixsley@bouygues-uk.com



Marie Chuet

Production Director
Tel: 07971 078094
marie.chuet@bouygues-uk.com



Kevan Barraclough

Senior H&S Manager
Tel: 07825 965528
kevan.barraclough@bouygues-uk.com



Sam Mayo

Community Relations
Tel: 07940 129331
samantha.mayo@bouygues-uk.com



Shared innovation

www.bouygues-uk.com